



Powered Reels Systems and Storage Reels

AQPR-06C-80 Powered Reel



General

The AQPR-06C-80 powered reel winch is a medium sized tower drive system for handling umbilicals, small flexibles, wire rope and coiled tubing. The unit is fitted with horizontal cylinders to engage the drive hubs into the reel centre with pins slotting into the reel drive holes and vertical hydraulic jacks to raise and lower the drive hubs of reels at full load capacity. Various adapter plates are available to suit different reel flange arrangements and hole centre diameters. The tower bases are bolted together and spacer beams are available to suit different reel widths.

The AQPR-06C-80 is powered by either an electro hydraulic or diesel engine powerpack and operated from a remote control console. There is a hydraulic valve block mounted on the main tower to allow the AQPR-06C-80 to operate in normal pay-in/pay-out, constant tension or render modes. This is done simply by adjusting valves locally on the tower.

The system is road transportable and can be dismantled into component parts that enable the equipment to fit into a standard 40' x 8' open top container.

Performance

Drive Torque:

- 25Te.m at 1.5 rev/min

Maximum Reel Weight:

- 80Te

Standard Reel Capacity:

- Width 0.5 – 6.0m
- Dia. 5.2m

Note: Larger reel widths and diameters can be accommodated using spacers and packers to suit client requirements.

Ancillary Equipment

Various drive adapters, spacer beams and storage reels are available with the system or can be readily fabricated to suit the project requirements.

Dimensions and Weight

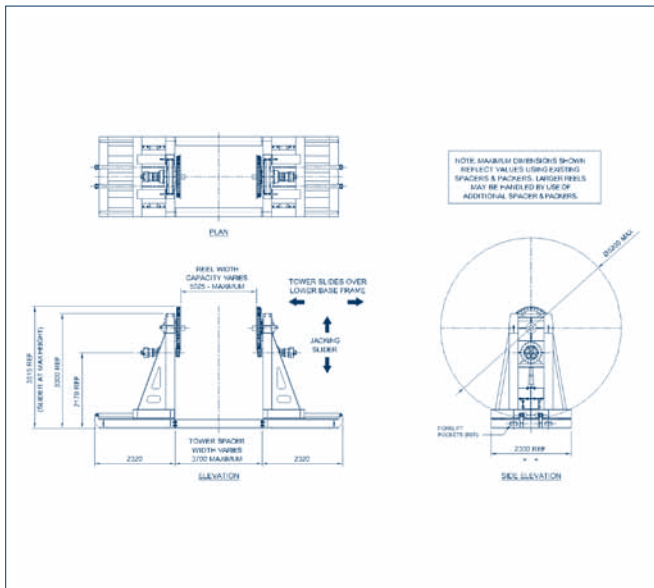
Description	PR-06C-80 Set Up	PR-06C-80 Towers	Typical Powerpack	Control Cabin	Spares Container
Length	8.34m Max	1.2m	2.7m	1.5m	2.0m
Breadth	2.3m	2.3m	1.8m	1.5m	1.9m
Height	3.5m	3.10m*	2.25m	2.2m	2.25m
Weight	12Te	6Te*/tower	4.5Te	1Te	2Te

*Details without packers

Note: The powerpack is supplied with 10m hydraulic supply hoses and a 20m long power cable as standard. Longer hoses or cables can be supplied on request.

Multi – Reel Lay Mode

The AQPR-06C-80 is compatible with the AQPRTS-02 powered reel track system. The track system comprises two sets of beams. The lower beams are seafastened to the deck of the vessel while the upper beams move along the lower beams using a combination of hydraulic cylinders, rams and clamps. The AQPR-06C-80 tower is bolted to the upper beams of the tracked system.



During installation of product the first reel will be lifted out of its cradles using the AQPR-06C-80 jacks and the product installed. On completion of the installation the reel will be lowered back into its cradles using the AQPR-06C-80 jacks before moving the towers to engage the next reel using the tracked system. This procedure would be repeated for a number of reels depending on the available deck length of the vessel.