



## Powered Reels Systems and Storage Reels



## AQPR-03 Powered Reels

### General

The AQPR-03 powered roller base is fully adjustable to drive different reel diameters and widths. Each base has four rollers, which rotate the reels by friction driving the rims of the reel flange. The reels are kept on the base by the lip flanges on each roller. The AQPR-03 is operated manually from a remote control console and the hydraulic motors for the system are powered by dedicated diesel or electro hydraulic powerpacks. The system is road transportable and can be dismantled into component parts that enable the equipment to fit into a standard 40' x 8' container.



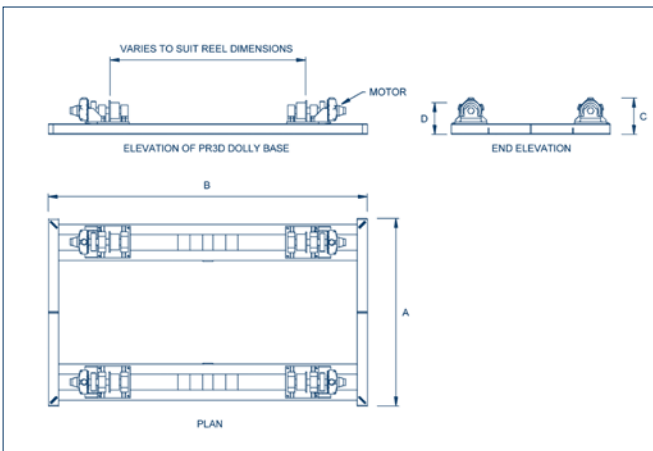
## Dimensions

	PR-03A	PR-03B	PR-03C	PR-03D
Dimension A (m)	4.000	4.000	4.000	4.7000
Dimension B (m)	8.000	8.000	8.000	8.000
Dimension C (m)	1.175	1.175	0.8	0.950
Dimension D (m)*	1.051	1.051	0.790	0.790

\*Dimension D is the height from the ground to the top of the roller.

\*\*Larger powerpacks can be supplied to increase the roller speeds if required.

Performance	PR-03A	PR-03B	PR-03C	PR-03D
Reel Weight Capacity (Te)	250	250	120	300
Reel Sizes - Flange ø (m)	3 - 9	3 - 9	3 - 9	4 - unlimited
Reel Sizes - Width (m)	2 - 7	2 - 7	2 - 7	2 - 7
Roller speed (m/min)**	25	25	23	21
Number of Driven Rollers	2	4	4	4
Force at Each Driven Roller (Te)	4.5	2.3	3.2	3
Unit Weight (Te)	12	13	8	12
Max. Deck Loading (Te/m <sup>2</sup> )	8.2	8.2	3.2	8.3



**Note:** This Drawing is a typical detail for the AQPR-03D-300. The beam layout may differ slightly for the AQPR-03A-250, AQPR-03B-250 and AQPR-03C-200. The powerpack is supplied with 10m hydraulic supply hoses and a 20m long power cable as standard. Longer hoses or cables can be supplied on request.